

19<sup>th</sup> March 2020

## Quality Notice

We would like to make you aware that we have found that between the beginning of 2016 and the middle of 2017, we have inadvertently supplied some Tralift manual chain hoists and Bravo lever hoists that included load chain that has come stamped with markings that can be confusing.

We supply our Tralift and Bravo manual chain and lever hoists with load chain grade T as standard. This letter T is stamped on the chain – please see image 1 to see what this should look like.

We have now found that on some Tralift manual chain hoists and Bravo lever hoists supplied by us in 2016 and 2017, both a factory identifier (D) as well as the chain grade (T) were included in the marking – please see image 2.

This should not have happened and could generate some confusion as there is also a DT grade chain, which would not be correct for our manual hoists.

We have had the D T marked chain independently tested in the UK – please see test report from Special Testing Ltd attached - and this has proven conclusively that this is grade T chain according to EN818-7 as it was supposed to be.

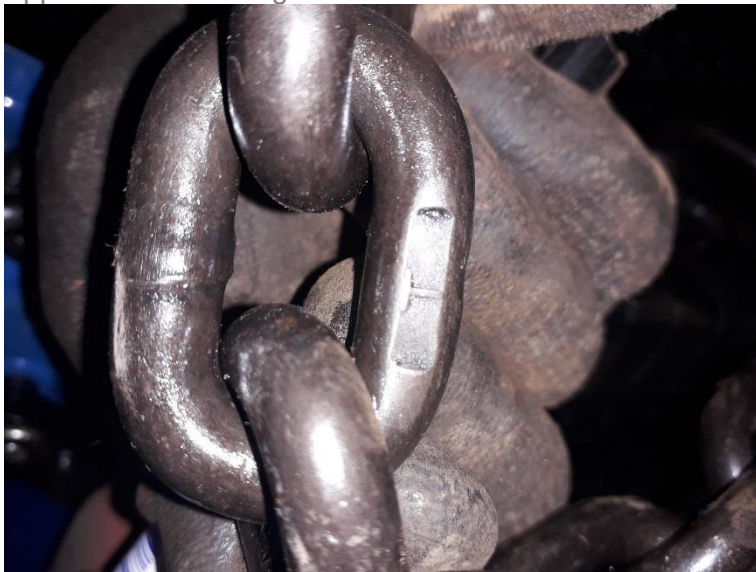
Users may wish to confirm at the next inspection that the chain being used is either the original Tractel chain described in this notice or Grade T chain which conforms to EN 818-7.

As this is only a matter of confusion and as there are no safety concerns, the only actions we recommend to owners and users are as follows:

- Please communicate this notice to the people that carry out inspection and maintenance on Tralift and Bravo hoists
- Please make sure that when the D T marked chain detailed above is replaced, it is replaced with T grade chain while taking into considerations the stipulations in the Tractel user manual



Appendix 1 – Markings on load chains



*Image 1 – Grade T marked chain*



*Image 2 – Factory Identifier D and Grade T marked chain*